

SENING™

BOTTOM LOADING COMPONENTS



The **Sening™** range of bottom loading and vapor recovery components brings safety and environmental protection to petroleum tank truck transportation.

All **Sening™** bottom loading components conform to API1004 and European CEN requirements. Sening has approvals for their components and systems in many countries including German PTP & TÜV, UK National Weights & Measures and Saudi ARAMCO.

Apart from manufacturing individual components our engineers can design a complete bottom loading system to suit your requirements. We can then supply you the complete system including all mechanical fittings and all pneumatic system components.

For more detailed information on our Bottom Loading components as well as the full range of **Sening™** tank truck products and systems please contact

FMC Technologies Measurement Solutions

Ellerbek Office:

Regentstr. 1, 25474 Ellerbek – Germany

Phone: +49 (4101) 304-0

Fax: +49 (4101) 304-133

Visit the Measurement Solutions website at
www.fmctechnologies.com

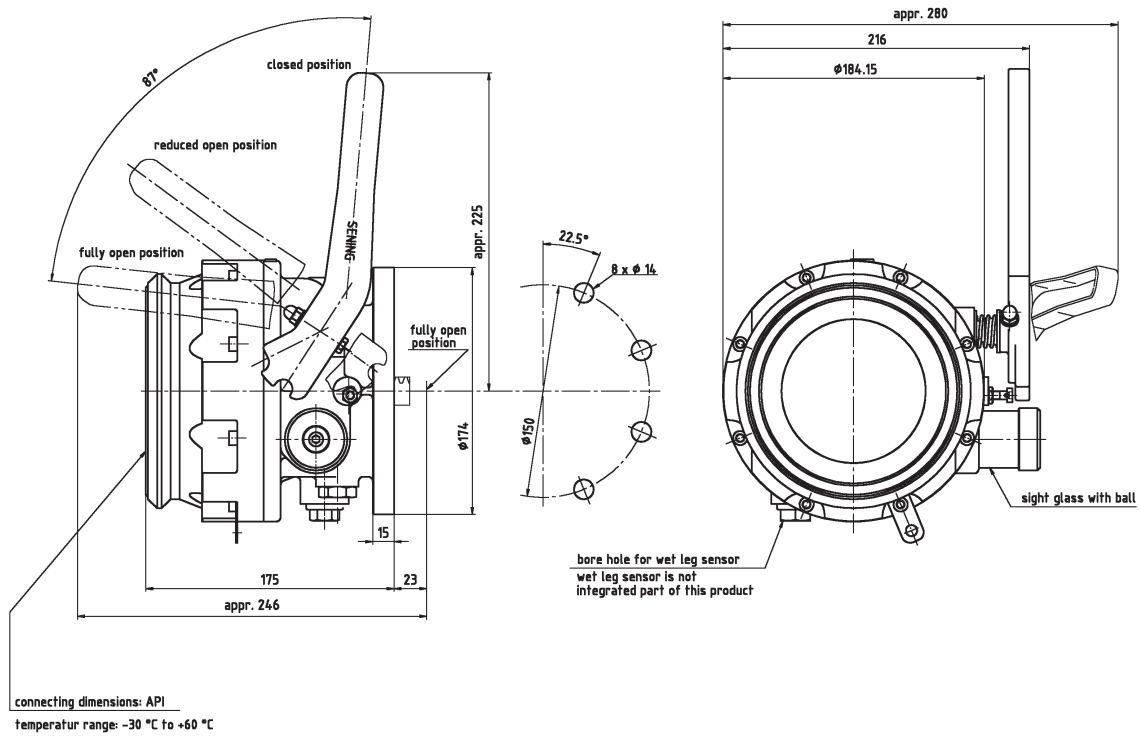
Lever API - VKVM

- Viton seals fitted as standard.
- Sight glass.
- Facility to mount position and wet leg sensor.
- Hardened anodized nose cone.
- Temperature range -30 to +60 °C

Can be supplied with sensors for S.P.D. system (version VKVM – I).



VKVM



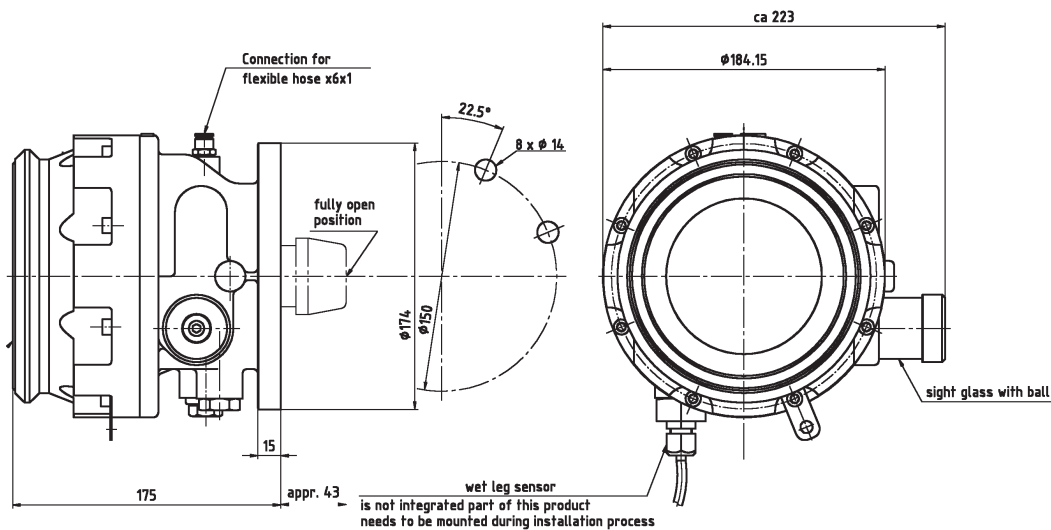
Pneumatic API - VKVP

Viton seals fitted as standard.
 Patented lip seal arrangement on nose cone.
 Nose cone can be indexed around.
 Sight glass fitted.
 Operating pressure 2.06 bar – 8.27 bar.

Can be supplied with sensors for
 S.P.D. system (version VKVP – I).



VKVP



Vapour Recovery Adaptor - **VRV**

Aluminum construction with anodized male nose.

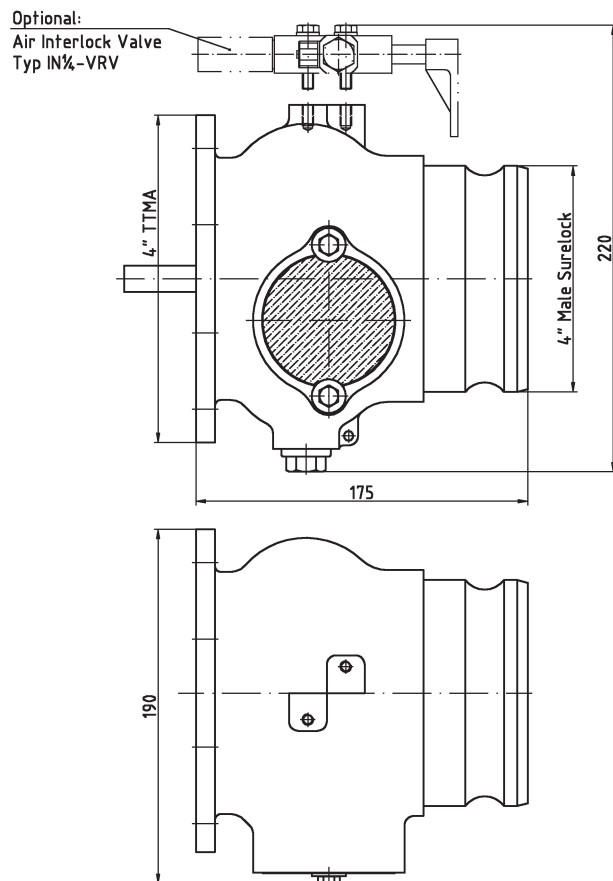
Low pressure drop.

Poppet operation

Sight glass

Drain plug

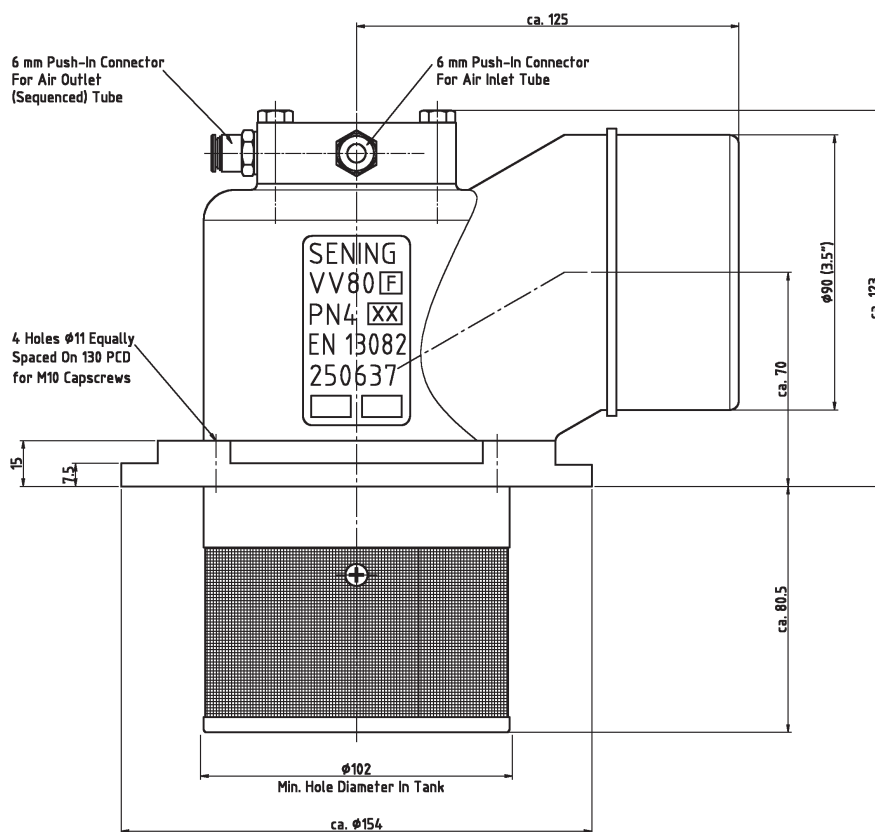
Can be supplied with pneumatic interlock
(part No. IN ¼ - VRV)



Compartment Vent Valve - **VV80F**

The valve is of sequential operation which means that until the valve is fully opened, air cannot pass to the next valve.
The valve comes with a flame protection screen fitted.

Operating pressure 3 bar – 8 bar.
Viton seals fitted as standard.



- Nominal Size: DN 80
- Nominal pressure: PN 4
- Max. Air Pressure: 8 bar
- Min. Air Pressure: 3 bar
- Operation Temperature: -30 °C to +60 °C
- Material Of Construction:
Aluminium Body, FKM And NBR Seals,
POM, Stainless Steel

Pressure Drop Curve see drawing 51.250811

4" Foot Valve - B0100-N1

90 degree high flow foot valve,

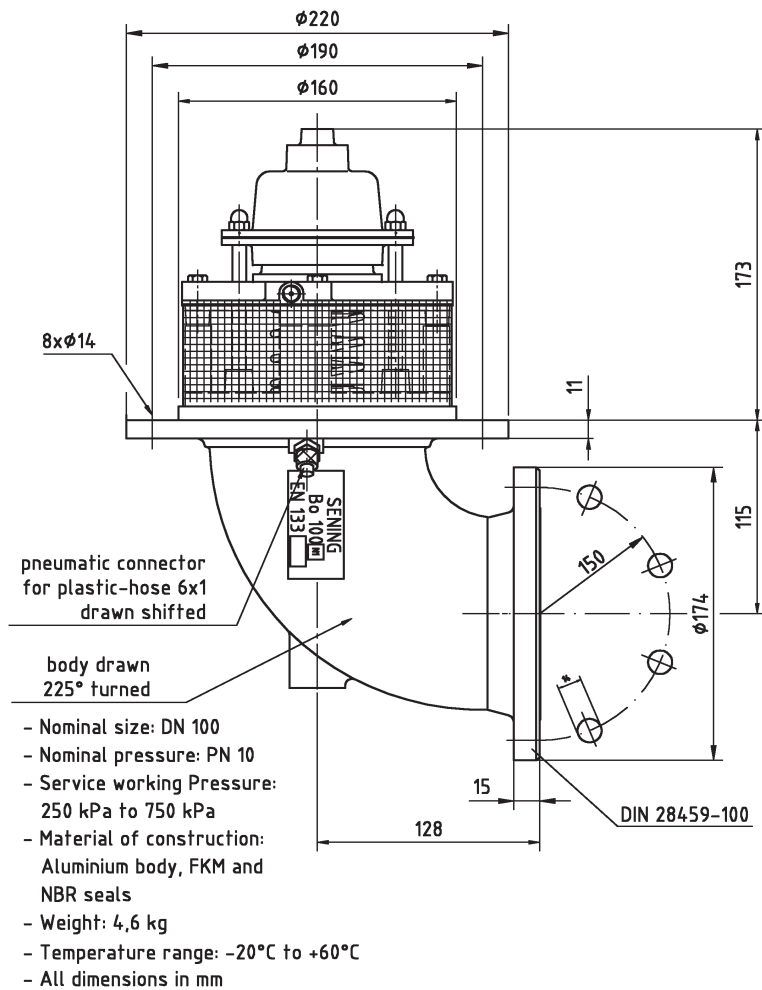
comes with wire gauze filter.

Viton seals fitted as standard.

Patented diaphragm operation which means there are no touching mechanical moving parts

Anti-splash design

Roll over shear point



Control Blocks - **STB**

Multi compartments.
Robust construction.
With master switch
Operating pressure 2.06 bar – 8.27bar.



Overfill Sensor - **NSE16**

16" length which can be cut and adjusted to suit each application.
5 wire which means the probes are wired in series.
Approved to Ex ia 11A T6 Class 1 Zone 0.
This sensor is compatible with existing monitors and is interchangeable with other makes of sensors.



Overfill socket - **OFS10**

10 pin socket 5 wire.
Comes with dust cap.
Option of pressure switch.
Approved to Ex ia 11A T6 Class 1
Zone 0.



Manlid Assembly RKG

20" diameter comes with weld neck ring, mounting hole for both overfill sensor and compartment vent valve.

Manlid has fitted pressure and vacuum relief valve.

Discharging capacity: 42.48 ccm per hour when the pressure inside the tank meets 0.021 Mpa.

Setting pressure of vent to breathe: 2.54 Kpa.

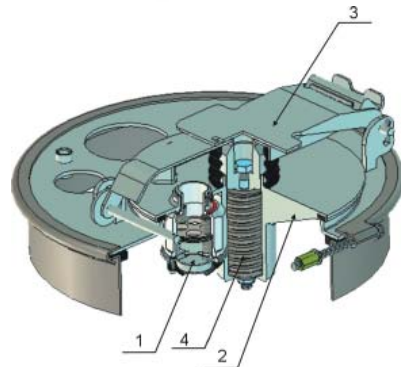
Breathing capacity: 131.67 ccm per hour when vacuum inside tank meets 7 Kpa.

Setting pressure of emergency exhaust valve: 0.0266 Mpa \pm 0.001 Mpa.

Pressure resistance: 0.254 MPA.



RKG 10



RKG 20

Gravity Coupler JDKJ

Available in male adaptor and female coupler configurations.

Available with either KAMLOK coupler or NPT female threads at the hose connection.

Mates with standard 4" API RP-1004 tank truck adaptors of Aluminium body with Buna-N seals.

Hose connection end angled at 15° downward for improved drainage.

Slotted cam arms for tamper-proof applications.

Rugged chrome plated chains and heavy duty lugs for durability.



Sening™ Economic Tank Truck Systems

Measurement Solutions

F. A. Sening GmbH

Regentstr. 1

D-25474 Ellerbek

Fon: +49 (0)4101-304-0

Fax: +49 (0)4101)304-133

E-mail: fa.sening@intl.fmcti.com