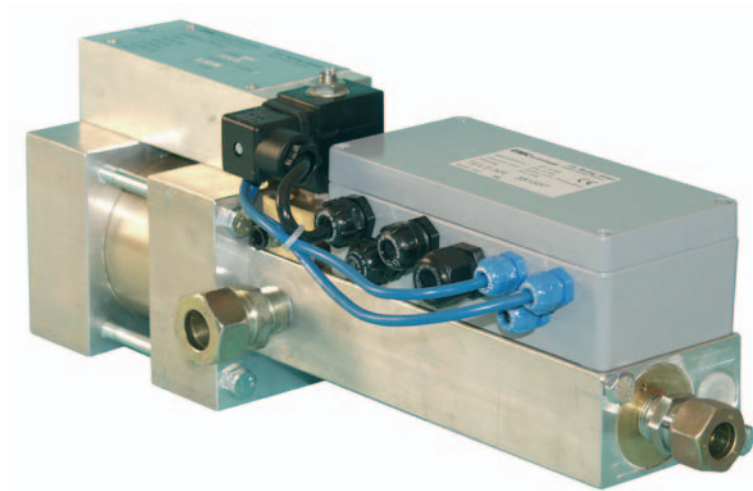


The Next Generation of Sening® Additive Injection Pumps: ADD 150 / ADD 350



The Sening® additive injection pump is a pneumatically actuated piston type metering pump which facilitates the accurate and reliable on-truck continuous injection of additives to heating fuel.

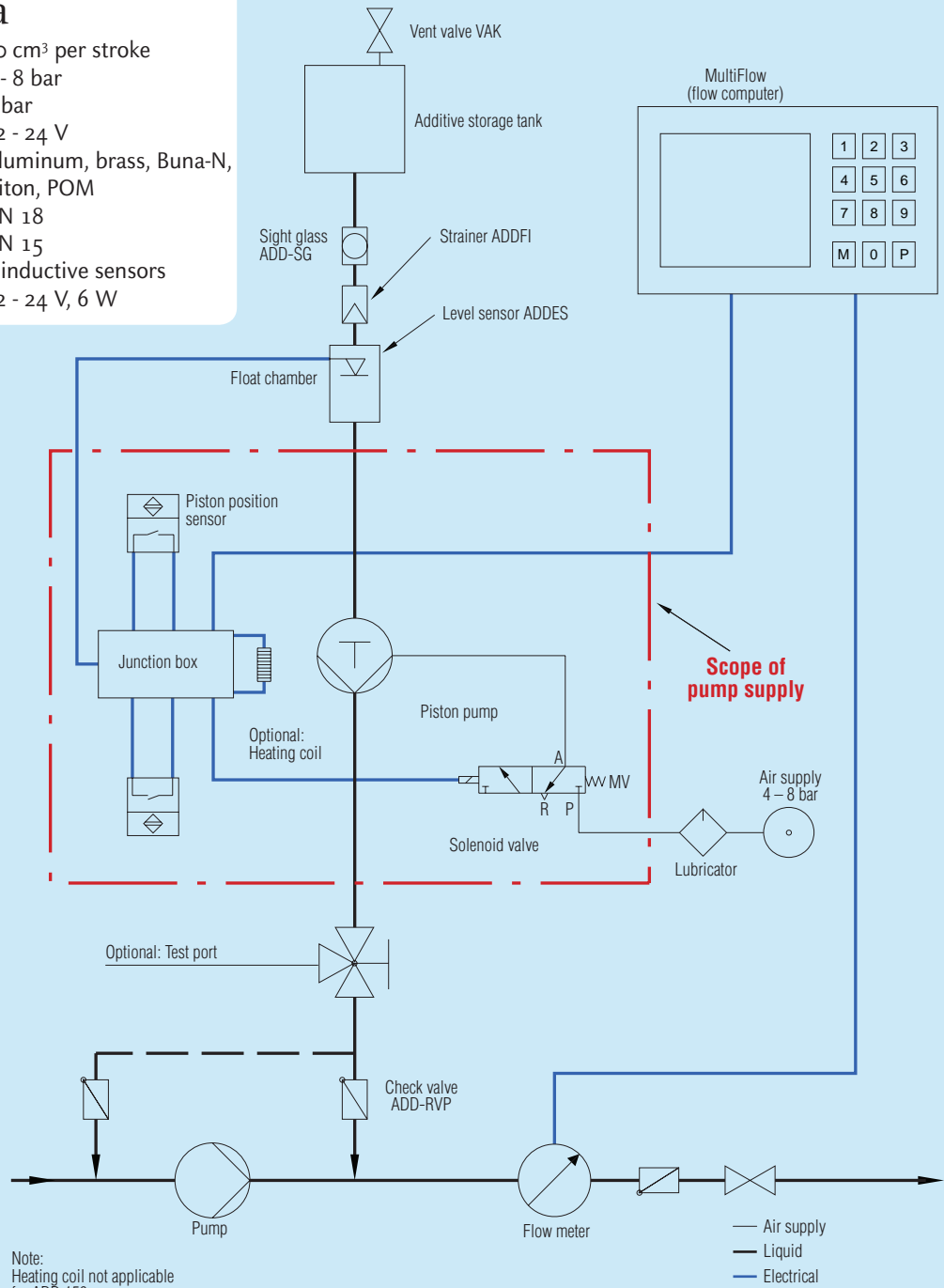
Application and Features:

- The pump avoids the use and disposal of small size additive cans or bottles.
- Continuous accurate injection ensures delivery of high quality fuel.
- Delivery of different grades of fuel oil from a single truck is possible.
- The Sening additive pump provides variable injection ratios between 1:500 and 1:4000.
- The pump is monitored and controlled by an electronic flow computer, e.g. **Sening™ MultiFlow**.
- Connected to the **Sening™ MultiFlow** flow computer critical functions of the injector area are monitored and should a malfunction occur the flow computer will display and alarm and, if required, the discharge is interrupted.
- A level sensor monitors the additive volume in the onboard additive storage tank. In case of insufficient additive the system will alarm and shut down.
- The pump has a compact design and enables variable installation positions.
- Integrated sensors constantly monitor the pump functions.
- The pump is self-priming.

Flow Diagram ADD 150 / ADD 350

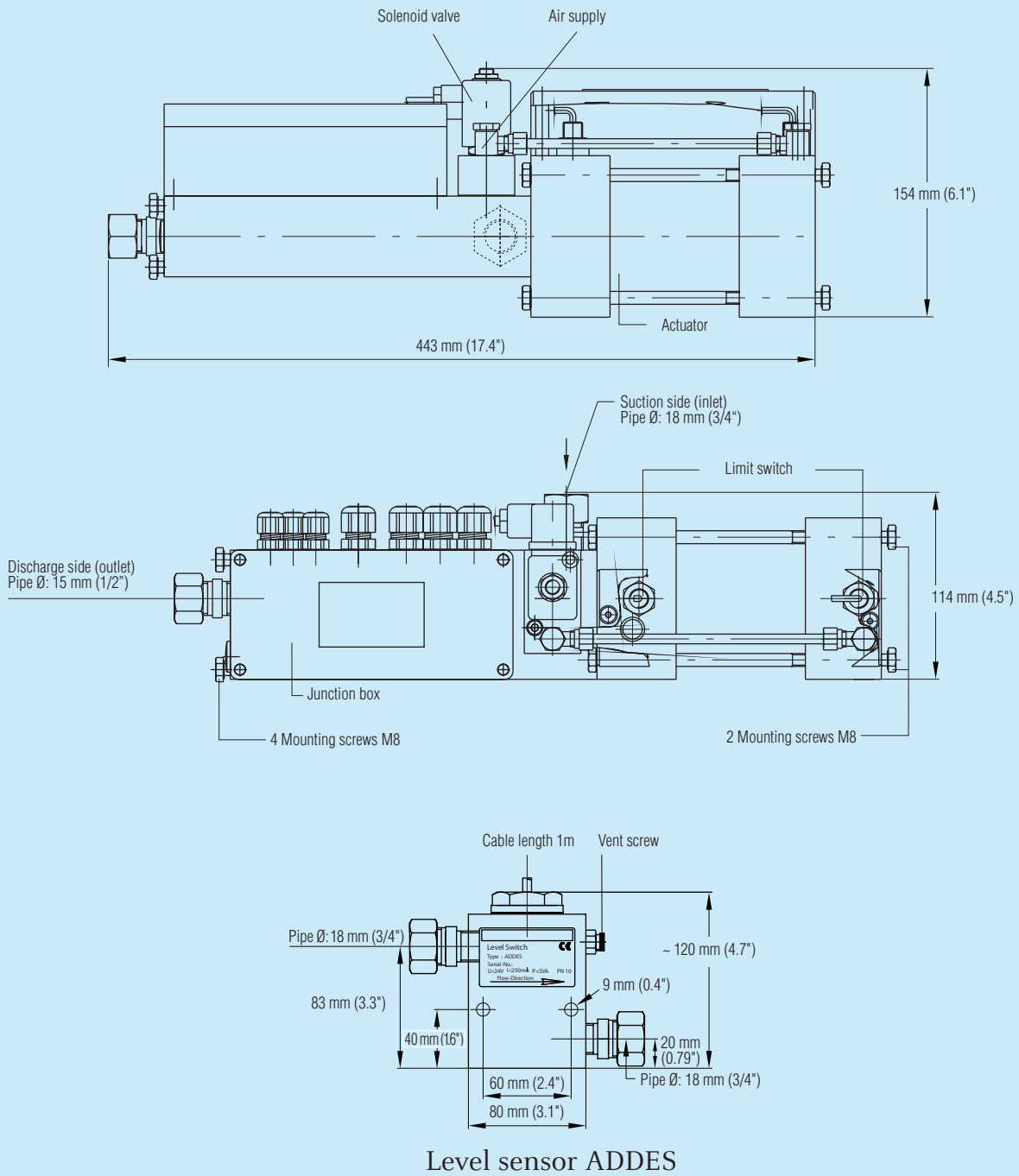
Technical data

Injection volume: 50 cm³ per stroke
 Air supply pressure: 4 - 8 bar
 Operating pressure: 9 bar
 Power supply: 12 - 24 V
 Materials: Aluminum, brass, Buna-N, Viton, POM
 Inlet connection: DN 18
 Outlet connection: DN 15
 Limit switch: 2 inductive sensors
 Solenoid valve: 12 - 24 V, 6 W

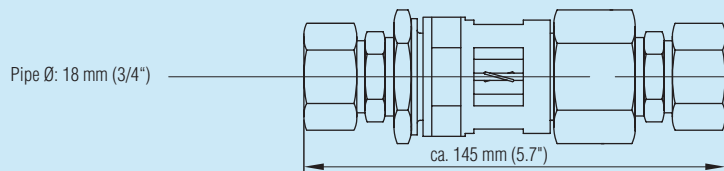


Additive Injection Pumps

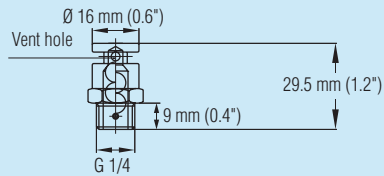
ADD 150 / ADD 350



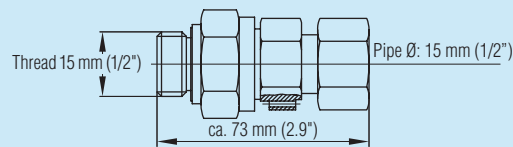
Accessories for Additive Injection Pumps ADD 150 / ADD 350



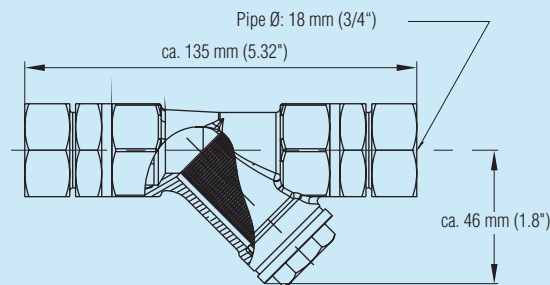
Sight glass ADD-SG



Vent valve VAK



Check valve ADD RVP



Strainer ADDFI