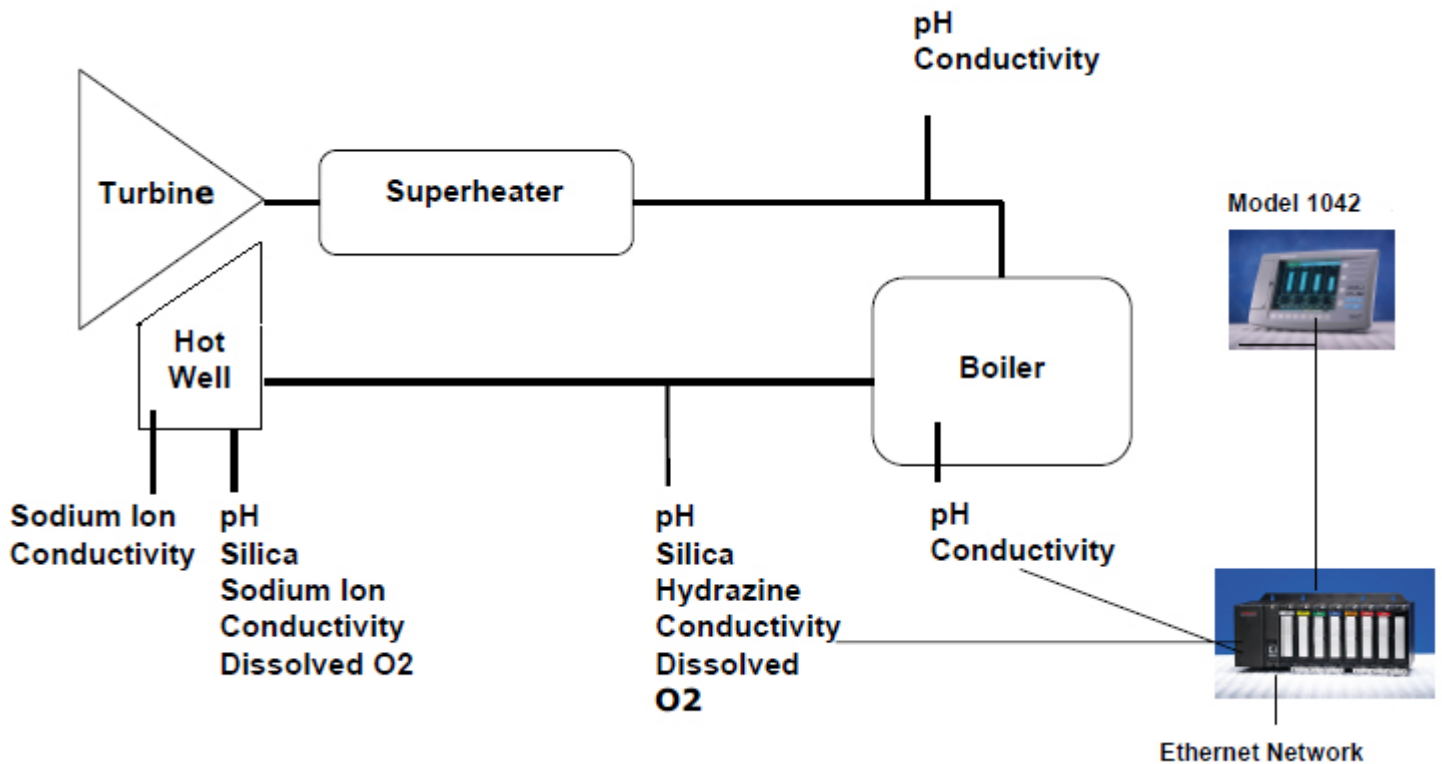




## HC900 Boiler Water Chemistry



### Problem

Water quality and steam purity are important considerations for ensuring availability and reliability of power generation components. Turbine blades, discs, boiler tubes, condensers, feedwater heaters, and condensers can experience corrosion and scaling problems if boiler water chemistry is not properly controlled and monitored.

Recognition of the cost savings available from improved water chemistry management has lead to increasingly stringent standards for water quality measurement and control.

Measurements are taken at numerous sample points throughout the water/steam cycle. Typical measured variables include pH, conductivity, dissolved oxygen, silica, hydrazine, and sodium ion. The measurements must be continuous and provide timely alarms so that corrective actions can be taken to maintain water quality.

### The HC900 Solution

The HC900 Controller offers an ideal solution to meet the total needs for water quality management. The HC900 accepts inputs from online analyzers and combines them with manual entries such as grab sample analyses to allow easy and automatic integration of all parameters required for water quality management.

The HC900 integrates continuously variable control functions with the discrete functions to manipulate any variety of final control elements required for water chemistry management.

The standard logic capability of each HC900 can be used to enhance alarm strategies to include startup/shutdown and special circumstances.

The interactive Operator Interface displays assist when operator intervention is required by its ability to generate easily recognizable alarms. The ability to group data assists in identifying the location where corrective action is to be taken.

When remote access to data is needed by plant personnel, HC900's open direct Ethernet connectivity allows most third party industrial software to be used for this purpose. Either the Modbus/TCP protocol driver or an OPC server can be utilized for HMI support, interface to a plant historian on the network, or to a DCS.

**Benefit Summary**

The HC900 provides outstanding benefits when applied to advanced water chemistry management:

- Distributed architecture permits controllers to be installed near the sampling panel, thus reducing installation costs.
- Excellent operator interface for both operators and laboratory personnel
- Identification of existing and developing trends from real-time and historical data.
- Increased speed of operator response
- Definition of water and steam variations attributed to startup, shutdown, cycling, and peaking operations
- Definition of current operating ranges
- Definition of optimum operating ranges for cycling and non-cycling operation

**Implementation**

The following is a quick overview of each of these five control strategies.

**Overview** - The HC900 Controller as shown in Figure 2 consists of a panel-mounted controller, available in 3 rack sizes along with remote I/O, connected to a dedicated Operator Interface (OI).



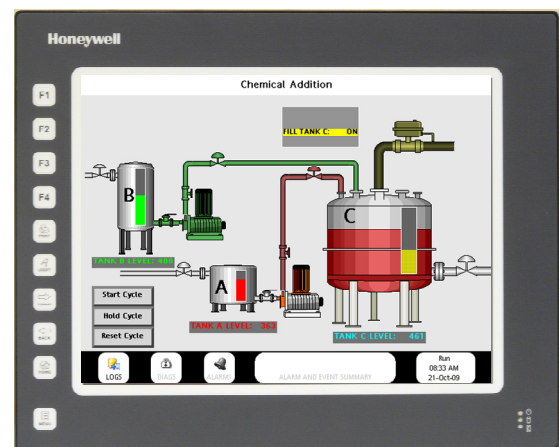
**Figure 2: HC900 Controller, 900 Control Station OI and Hybrid Control Designer Software**

All field signals terminate at the controller. The controller has universal, isolated analog inputs, analog outputs and a wide variety of digital input and output types. In addition, there can be up to 4 remote I/O racks. Up to 1920 points with remote I/O and Up to 960 Isolated, Analog Inputs. This controller will provide all the water monitoring functions including calculations, loop and logic control as needed.

**Configuration.** The Hybrid Control Designer tool supports advanced graphical configuration techniques to allow a variety of strategies to be easily implemented. The large library of function blocks that are soft-wired (over 100 types and 2000 blocks) support the water chemistry application. The run-mode configuration monitoring and editing capability allows these strategies to be tested and refined on-line as process knowledge is gained.

**Monitoring :** The complete operation can be monitored and controlled from the easy to use, familiar displays of the 900 Control station (as shown in Fig.3) which allows easy drag and drop of displays.

- 900 Control Station has 10" or 15" touch screen display
- Contains pre-defined display features and custom display development tools
- Has color display and touch panel user interfaces that enhance process monitoring and simplifies online controller changes
- Uses Station Designer software for configuration and Works with HC900 Control Designer software to create control station database that is imported from HC900 controller



**Figure 3: 900 Control Station OI (15'')**

## HMI and SCADA through Experion HS and HC900

EExperion HS is a powerful software platform that incorporates innovative applications for Human Machine Interface (HMI) and Supervisory Control and Data Acquisition (SCADA). It is comprised of a subset of Honeywell's Experion PKS components and is specifically packaged to provide a targeted and robust system for small to medium automation projects.

**Data Storage:** The data storage feature of the 900 Control Station can be used to record process information during operation to an expandable compactflash card slot which has protected access behind the panel and it allows for increased data logging capacity with history, the optional flash memory card will also help with screen printing, web access to data, FTP transfers, and custom web page support.

**Open Connectivity Over Ethernet.** Use popular HMI, data acquisition, OPC server, and HC900's HC Designer configuration software over an Ethernet LAN concurrently to access HC900 controllers via Modbus/TCP protocol.

**Peer to Peer Communications.** Any HC900 can support up to 32 peer controllers for exchange of analog or digital data over Ethernet.

### More Information

For more information on HC900, visit [www.honeywellprocess.com](http://www.honeywellprocess.com), or contact your Honeywell account manager.

For more information on OPC Server for Modbus, visit [www.matrikonopc.com](http://www.matrikonopc.com)

### Automation & Control Solutions

Process Solutions  
Honeywell

1250 West Sam Houston Parkway South  
Houston, TX 77042

Lovell Road, Southern Industrial Estate  
Bracknell, Berkshire, England RG12 8WD

Shanghai City Centre, 100 Junyi Road  
Shanghai, China 20051

SO-12-30-ENG  
April 2012  
© 2012 Honeywell International Inc.

The Honeywell logo is displayed in a bold, red, sans-serif font.